



Wi-Fi 7

EasyMesh
— Compatible —

BE19000 Tri-Band Wi-Fi 7 Range Extender

Boost your Wi-Fi



RE800BE

3.9× Faster Speed
19 Gbps Wi-Fi*

Unprecedented 10G
10G Port + Gigabit Ports

Boosted Coverage
8× High-Gain Antennas

Lower Latency
MLO Improves Throughput^Δ

Highlights

Wi-Fi 7 — Wi-Fi Like Never Before



3.9× Faster Speeds to Power Your Devices[※]

Multi-Link Operation (MLO) enables RE800BE to transmit data with Wi-Fi 7 clients across the 6 GHz, 5 GHz and 2.4 GHz bands simultaneously, delivering 3.9× faster Wi-Fi speeds than Wi-Fi 6/6E range extenders.[△]



Ultra Smooth Wi-Fi with 4× Lower Latency[☆]

4× lower latency than Wi-Fi 6/6E range extenders enables emerging applications like VR/AR, video conferencing, and online gaming to always run at top performance.



Unprecedented 19 Gbps 12-Stream Tri-Band Wi-Fi[†]

Wi-Fi 7 unleashes the full potential of the 6 GHz band with up to 320 MHz channels and 11.5 Gbps Wi-Fi speeds. Enjoy full access to 8K streaming and high-speed downloading.^{†△}



Higher Capacity for More Devices[†]

Communicates with multiple devices via 12 streams and tri-band simultaneously. Combined with its powerful CPU, Wi-Fi 7 provides congestion-free signals to your laptop, TV, thermostat, and baby monitor.

Highlights

Eliminate Wi-Fi Dead Zones with Unrivalled Wi-Fi 7



Flexible Whole Home Mesh Wi-Fi

More than a Traditional Wi-Fi Extender

Connect with an EasyMesh-compatible router to create a mesh network for seamless whole home coverage or any other Wi-Fi router to boost your Wi-Fi range.^{†*}



Wi-Fi Dead Zone Killer



Uninterrupted Streaming[§]



One Wi-Fi Name

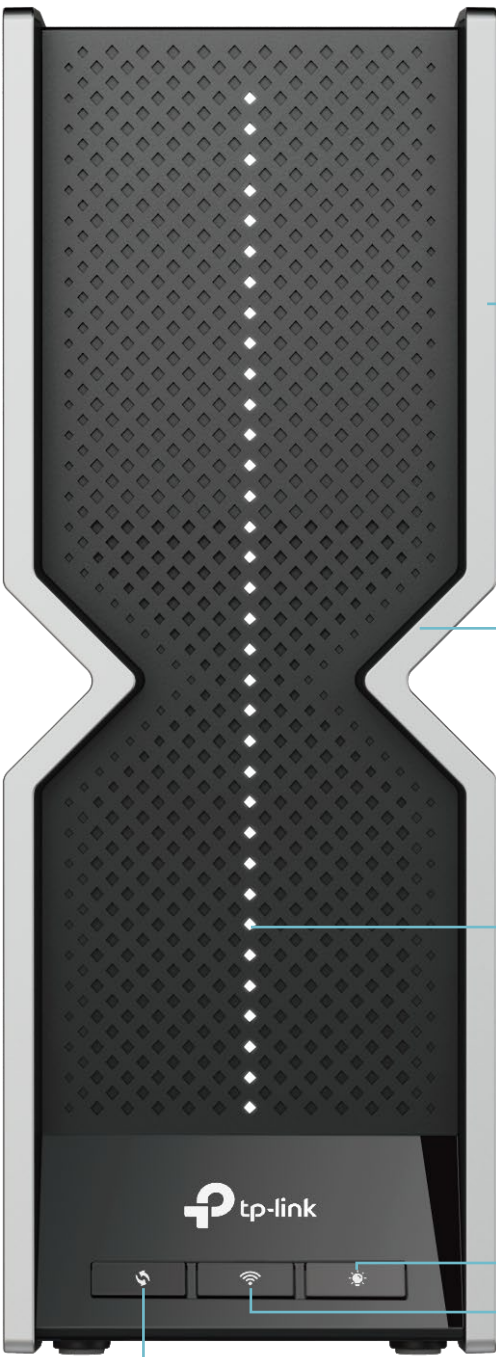


Unified Management^{**}



Check the full list of TP-Link's EasyMesh-compatible extenders and routers at tp-link.com/easymesh/product-list/

Highlights



Advanced Case Design

- A larger heat sink and refined casing keep the system cool under performance.

V-Fold Design

- Maintains a sharp aesthetic and breaks the stereotype of Wi-Fi products.

LED Light Strip for Easier Use

- Displays Wi-Fi signal strength to help you better place RE800BE and receive better connections.

One-Touch Setup and Management

- Turn on/off the LEDs with the LED button
- Turn on/off Wi-Fi with the Wi-Fi button
- Instantly connect to a router with the WPS button



Blazing-Fast 6 GHz Band

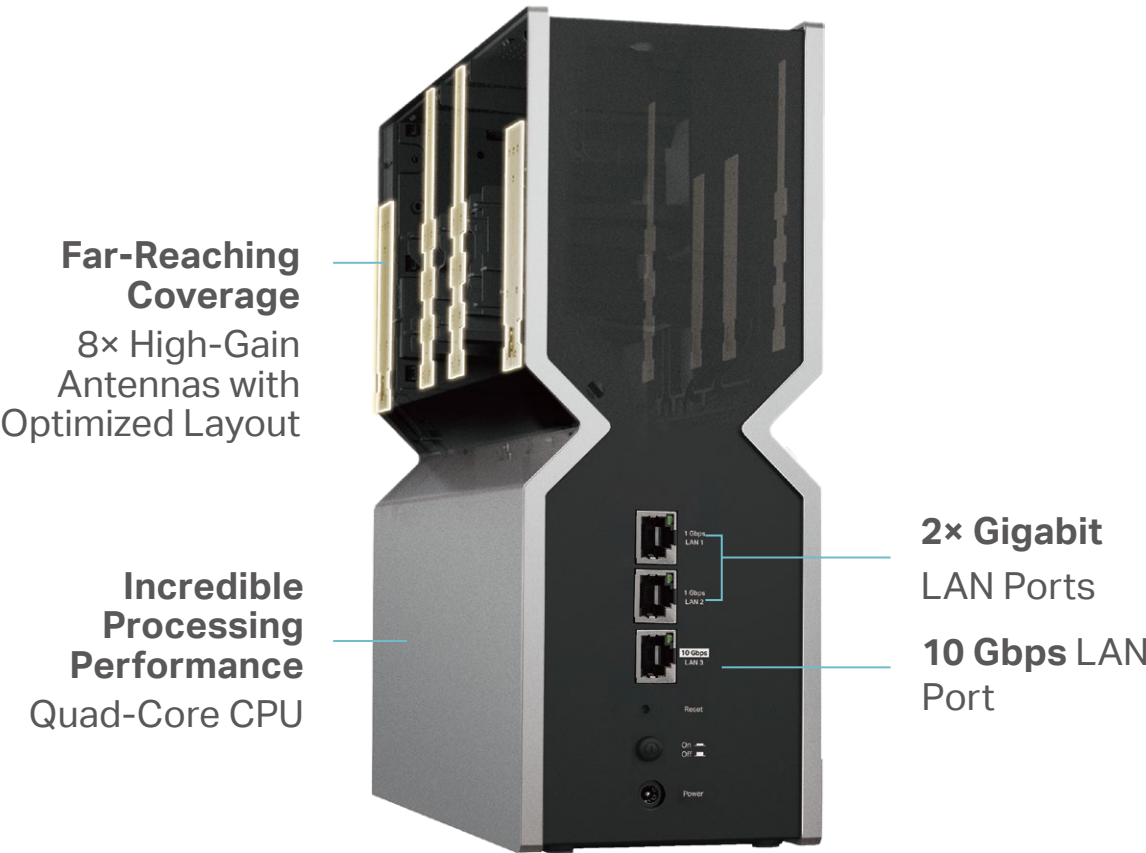
With efficient 6 GHz connections and the widest 320 MHz bandwidth to date, RE800BE removes frustrations caused by overcrowded Wi-Fi networks.^Δ



Great Compatibility

Take your Wi-Fi to the next level without worry. RE800BE offers great compatibility by working with all Wi-Fi generations and devices.^{***}

BE19000 Tri-Band Wi-Fi 7 Range Extender



Far-Reaching Coverage

8× High-Gain Antennas with Optimized Layout

Incredible Processing Performance

Quad-Core CPU

2× Gigabit LAN Ports

LAN Ports

10 Gbps LAN Port

Port

10 Gbps Wired Connection

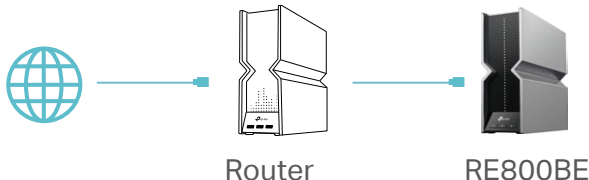
• Range Extender Mode

Plug your PC, smart TV, game console, or NAS device into the 10 Gbps port for a blazing-fast wired connection.

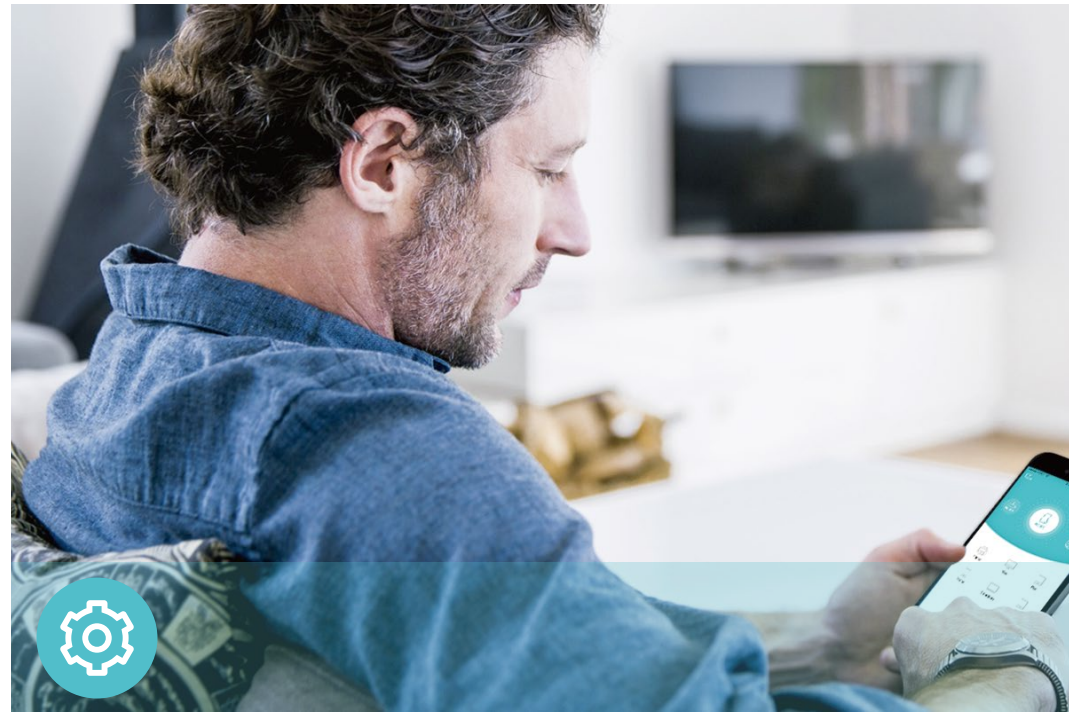


• Access Point Mode

Connect RE800BE with a router to easily turn that 10G wired connection into a high-speed tri-band wireless signal.



Features



Ease of Use

- Intuitive Web UI– Ensures quick and simple installation without hassle
- Fast Setup – One-touch connection with the WPS button
- Hassle-free Management with Tether App – Network management is made easy with the TP-Link Tether App, available on any Android or iOS device
- Online Upgrade – Keeps you informed of the latest firmware and allows online updating on the web UI



Speed

- Ultimate Wireless Speed – Combined wireless speeds of up to 1376 Mbps at 2.4 GHz, 5760 Mbps at 5 GHz, and 11520 Mbps at 6 GHz[†]
- Support Wi-Fi 7 – Turbocharge your devices with wireless speeds of up to 19 Gbps
- Adaptive Path Selection – Keep your network running at top-speed by automatically choosing the fastest connection path to the router



Reliability

- Simultaneous Tri-Band – Separate Wi-Fi bands enable more devices to connect to your network without a drop in performance
- Reliable Connection – External antennas for optimal Wi-Fi coverage and reliable wireless connections
- Ultra-Low Latency – Take advantage of ultra-low latency to enjoy smoother online experience


Specifications

Hardware

- Button: LED Button, Wi-Fi Button, WPS Button, Power On/Off Button, Reset Button
- Port: 1× 10 Gbps LAN Port + 2× Gigabit LAN Ports
- Antennas: 8× High-Gain Antennas with Optimized Layout
- Power Consumption: 44W (Max)
- Dimensions: 11.9 × 10.3 × 3.8 in (302 × 262.5 × 96 mm)

Wireless

- Wireless Standards: IEEE 802.11ax/be 6 GHz, IEEE 802.11a/n/ac/ax/be 5 GHz, IEEE 802.11b/g/n/ax/be 2.4 GHz
- Frequency: 2.4 GHz, 5 GHz, and 6 GHz
- Signal Rate: 1376 Mbps at 2.4 GHz, 5760 Mbps at 5 GHz, 11520 Mbps at 6 GHz
- Transmit Power: CE: ≤ 23 dBm EIRP (5.17 GHz-5.35 GHz), ≤ 30 dBm EIRP (5.47 GHz-5.725 GHz); ≤ 20 dBm EIRP (2.4 GHz); ≤ 23 dBm EIRP (6 GHz)



For more information, please visit

https://www.tp-link.com/products/details/?model=RE800BE_V1

or scan the QR code left

- Reception Sensitivity:
2.4 GHz:
11ax HE20 MCS0:-96dBm, 11ax HE20 MCS11:-66dBm
11ax HE40 MCS0:-93dBm, 11ax HE40 MCS11:-65dBm
11be EHT20 MCS13:-62dBm, 11be EHT40 MCS13:-58dBm
5 GHz:
11ax HE20 MCS0:-95dBm, 11ax HE20 MCS11:-64dBm
11ax HE40 MCS0:-93dBm, 11ax HE40 MCS11:-62dBm
11ax HE80 MCS0:-89dBm, 11ax HE80 MCS11:-59dBm
11ax HE160 MCS0:-85dBm, 11ax HE160 MCS11:-56dBm
11be EHT20 MCS13:-58dBm, 11be EHT40 MCS13:-56dBm
11be EHT80 MCS13:-53dBm, 11be EHT160 MCS13:-51dBm
6 GHz:
11ax HE20 MCS0:-95dBm, 11ax HE20 MCS11:-65dBm
11ax HE40 MCS0:-93dBm, 11ax HE40 MCS11:-63dBm
11ax HE80 MCS0:-90dBm, 11ax HE80 MCS11:-60dBm
11ax HE160 MCS0:-87dBm, 11ax HE160 MCS11:-60dBm
11be EHT20 MCS13:-60dBm, 11be EHT40 MCS13:-58dBm
11be EHT80 MCS13:-54dBm, 11be EHT160 MCS13:-52dBm
11be EHT320 MCS0:-84dBm, 11be EHT320 MCS13:-48dBm

- Wireless Function: LED Control, Access Control, Power Schedule, Wi-Fi Coverage
- Wireless Security: WPA/WPA-PSK2 encryptions, WPA2/WPA3
- Others
 - Certification
CE, RoHS
 - System Requirements
Internet Explorer, Firefox, Chrome, Safari, or other JavaScript-enabled browser

*You are recommended to use the latest version
 - Package Contents
Wi-Fi 7 Range Extender RE800BE
Power Adapter
Quick Installation Guide
RJ45 Ethernet Cable

¹Maximum wireless signal rates are the physical rates derived from IEEE Standard 802.11 specifications. Higher capacity is based on laboratory test data, which analyzed the connections of different devices on the 6 GHz, 5 GHz, and 2.4 GHz bands simultaneously. These devices simulated a typical home scenario by running simultaneous applications in the same room that included 4K video, 1080p video, 720p video, file downloading, web browsing, IP cameras, and other IoT devices. Actual wireless data throughput, wireless coverage, and connected devices are not guaranteed and will vary as a result of internet service provider factors, network conditions, client limitations, and environmental factors, including building materials, obstacles, volume and density of traffic, and client location.

²The product may not be compatible with routers or gateways with firmware that has been altered, is based on open source programs, or is non-standard or outdated.

³Uninterrupted Streaming is designed for devices that support the 802.11k/v standard.

⁴Use of Wi-Fi 7 (802.11be), Wi-Fi 6 (802.11ax), and features including Multi-Link Operation (MLO), 320 MHz Bandwidth, 4K-QAM, Multi-RU, OFDMA, and MU-MIMO requires clients to also support the corresponding features. The 320 MHz bandwidth is only available on the 6 GHz band. Simultaneously, the 320 MHz bandwidth on the 6 GHz band and 160 MHz bandwidth on the 5 GHz band may be unavailable in some regions/countries due to regulatory restrictions. Double channel width and speed refer to 320 MHz compared to 160 MHz for Wi-Fi 6 range extenders.

*TP-Link EasyMesh-compatible products can network with other devices that use EasyMesh. Failed connections may be due to firmware conflicts of different vendors. The EasyMesh-compatible function is still being developed on some models and will be supported in subsequent software updates.

**Unified management is available for TP-Link EasyMesh-compatible devices. This feature is not guaranteed for devices from other vendors.

***Wi-Fi generations represent the wireless standard IEEE 802.11 a/b/g/n/ac/ax/be. All devices need to support 802.11 Wi-Fi protocols.

⁵Use of WPA3 requires clients to also support the corresponding feature.

⁶3.9× faster Wi-Fi speed refers to the theoretical speeds of Wi-Fi 7 clients when connected to RE800BE compared with a Wi-Fi 6 or Wi-Fi 6E range extender. Wi-Fi 7 clients need to support Multi-Link Operation (MLO) and the 6 GHz band to reach up to 18.7 Gbps when connected to the 6 GHz, 5 GHz and 2.4 GHz bands of RE800BE simultaneously. Wi-Fi 6 and Wi-Fi 6E range extenders may only provide 4804 Mbps on the 5 GHz or 6 GHz bands separately.

⁷4× Lower Latency refers to the latency improvement of Wi-Fi 7 range extenders compared to Wi-Fi 6/6E range extenders, based on laboratory test data. The test conditions had the same 5 GHz or 6 GHz single-frequency wireless interference and tested the maximum latencies of Wi-Fi 7 clients (with MLO turned on) connecting to the 5 GHz and 6 GHz bands of RE800BE (with MLO turned on) simultaneously and to the 5 GHz or 6 GHz bands of a Wi-Fi 6/6E range extender (without the MLO function). Actual network speed may be limited by the rate of the product's Ethernet WAN or LAN port, the rate supported by the network cable, internet service provider factors, and other environmental conditions. This range extender may not support all the mandatory features as ratified in the IEEE 802.11be specification.

This product is compatible with standardized EasyMesh technology but has not obtained the Wi-Fi EasyMesh™ certification. Further software upgrades for feature availability may be required.

Pictures are for reference only. If there are any inconsistencies between the product image and the actual product, the actual product shall prevail.

©2023 TP-Link