

## WH66 Datasheet



### All-in-one UC Workstation Redefine Your Workspace

The Yealink WH66 is the Industry-leading **DECT wireless headset**, with WH66 Dual and WH66 Mono two models, opening an entirely new form of desktop collaboration. Work seamlessly with major UC platforms and integrate natively with Yealink IP Phones. 4.0 inch (480 x 800) capacitive touch screen of the base offers a new work experience, just one touch, all control. Act as a workstation, managing phone calls, connecting with multiple devices (desk phone/mobile phone/computer), charging mobile phones wirelessly, and even playing a speakerphone's role. Best of all, deploying such a multi-functional workstation only needs to plug in directly. Easiest things to do, greatest convenience to enjoy.



Acoustic Shield  
Technology



Optimal Audio  
Experience



Touch Screen  
LCD



Multiple Devices  
Connection



Speakerphone  
Mode



Built-in USB  
Hub



Qi Wireless  
Charger



Customizable  
Busylight

## Key Features

- [USB Connection](#)
- [4.0 inch \(480 x 800\) capacitive touch screen](#)
- [Yealink Acoustic Shield Technology](#) 2-ports USB 3.0 hub
- [Wireless mobile phone charger](#)
- [Crystal speakerphone](#)
- [Supports busylight](#)
- [Teams and Skype for Business compatible](#)



WH66 Mono: Teams  
WH66 Mono: UC



WH66 Dual: Teams  
WH66 Dual: UC



WH66 with charger  
\* Wireless charger is optional

## All-in-One UC Workstation

Desktop collaboration boosts efficiency a lot especially when Working from Home, but it can be also annoying that the desktop is very messy with multiple device cables. Take control of your desktop collaboration environment with WH66:

- Connect all devices you want with built-in Bluetooth and USB ports.
- Expand the PC's connectivity with a 2-port USB 3.0 hub.
- Control all calls on the 4.0 inch (480 x 800) capacitive touch screen by simply finger touch.
- Function as a hand-free phone, freeing from wearing a [conference headset](#).
- Charge your mobile phone wirelessly and transform it into a nice efficient conferencing device.

### Be Heard Crystal Clearly

With Yealink Acoustic Shield Technology, the two Microphones built in WH66 block the background noise automatically but ensure participant's voice is heard clearly, greatly boosting communication efficiency.

### Interruption Free

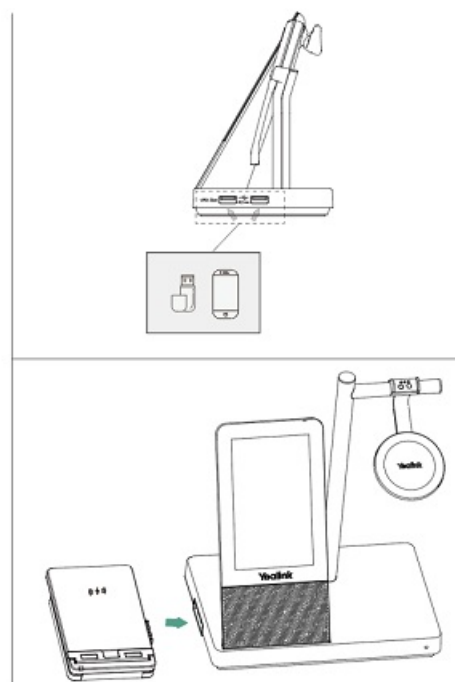
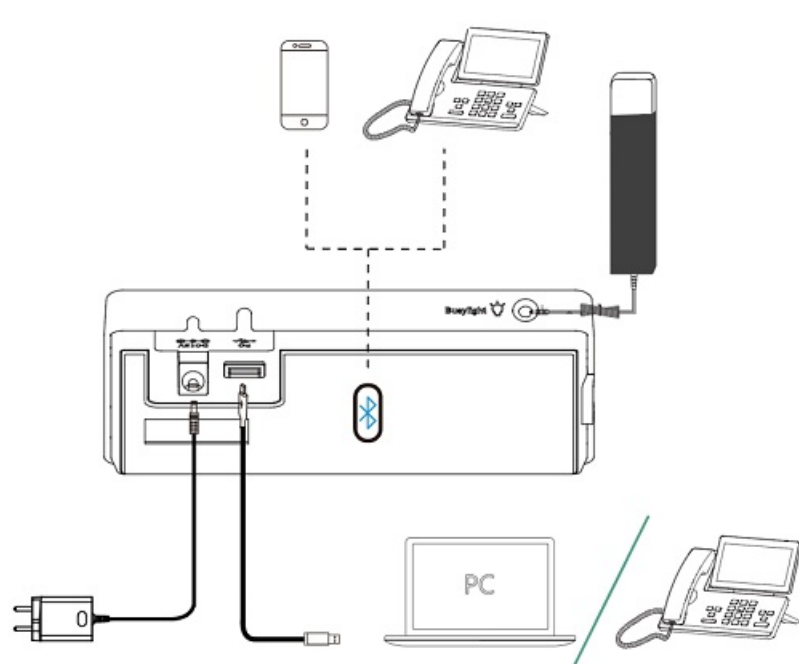
Busylight is enabled in WH66. With the light on the headset or BLT60 on the desk turning red, people around you would know that you are on the phone, instead of interrupting you unknowingly. Just stay focused on conversation, for higher efficiency, and better collaboration.

## Specifications

Specifications	Introduction
General	<ul style="list-style-type: none"> <li>• 4.0 inch (480 x 800) capacitive touch screen</li> <li>• 2 feature buttons</li> <li>• 1 Type-A USB 3.0 port</li> <li>• Built-in Bluetooth 4.2</li> <li>• Connectivity: USB 3.0 &amp; 2 x Bluetooth devices</li> <li>• Integrated busylight LED indicator</li> <li>• Built-in hub: 2 Type-A USB 3.0 ports</li> <li>• Boom arm adjustable: 320°</li> <li>• Charging stand (for headset)</li> </ul>
Battery	<ul style="list-style-type: none"> <li>• Talk time: up to 13 hours (Mono), up to 14 hours (Dual)</li> <li>• Standby time: 90 hours (Mono), 125 hours (Dual)</li> <li>• Charging time: 2.5 hours (5 V/1.2 A)</li> </ul>
DECT	<ul style="list-style-type: none"> <li>• Wireless range: up to 160 m/525 feet</li> <li>• Secure DECT (level): Step C: authentication – DSAA2, encryption – DSC2 (128 bit)</li> </ul>
Audio (Headset)	<ul style="list-style-type: none"> <li>• Microphone type: dual microphone</li> <li>• Microphone sensitivity: -44.0+/-3 dBV</li> <li>• Microphone frequency range: 100 Hz-10 kHz</li> <li>• Speaker size: Φ 28</li> <li>• Speaker sensitivity: 92.5+/-3 dB, 0.179 V</li> <li>• Speaker impedance: 32+/-4.8 Ω</li> <li>• Speaker max output power: 30 mW</li> <li>• Speaker frequency range: 20 Hz-20 kHz</li> <li>• Talk mode: wideband, 100 Hz~8 kHz, 16 kHz sample rate</li> <li>• Music mode: full-band, 20 Hz~20 kHz, 48 kHz sample rate, Stereo (Stereo only supported by Dual headset)               <ul style="list-style-type: none"> <li>• Hearing Protection</li> <li>- Peak Block Protection (EN50332)</li> <li>- Australian G616 Protection (AU G616)</li> <li>- Daily Noise Exposure Protection</li> </ul> </li> </ul>

Audio (Base)	<ul style="list-style-type: none"> <li>· Microphone type: ECM Omni directional microphone</li> <li>· Microphone sensitivity: -38.0+/-2 dBV</li> <li>· Microphone frequency range: 70 Hz-20 kHz</li> <li>· Speaker size: 40 mm x 20.8 mm</li> <li>· Speaker sensitivity: 97+/-3 dB</li> <li>· Speaker impedance: 4 <math>\Omega</math>+/-15%</li> <li>· Speaker max input power: 4 W</li> <li>· Speaker frequency range: 160 Hz-20 kHz</li> </ul>
Easy Call Management	<ul style="list-style-type: none"> <li>· Answer/End/Reject a call</li> <li>· Volume up/down</li> <li>· Microphone mute</li> <li>· Move the microphone boom arm up to mute, or down to unmute</li> </ul>
Package Features	<ul style="list-style-type: none"> <li>· Package contents: <ul style="list-style-type: none"> <li>- WHB660 Base</li> <li>- WHM621 Headset or WHD622 Headset</li> <li>- Power Adapter</li> <li>- 2 x 1 m USB 3.0 Cable</li> <li>- Quick Start Guide</li> </ul> </li> <li>· Optional accessories: <ul style="list-style-type: none"> <li>- Busylight BLT60</li> <li>- Wireless Charger</li> <li>- Bluetooth Dongle BT50</li> </ul> </li> <li>· WH66 Mono: Base: 398 g, Headset: 80 g</li> <li>· WH66 Dual: Base: 398 g, Headset: 127 g</li> <li>· Qty/CNT: 10 PCS</li> <li>· N.W/CTN: WH66 Mono: 10.46 kg; WH66 Dual: 10.96 kg</li> <li>· Giftbox Size: 255 mm x 204 mm x 135 mm</li> <li>· Carton Meas: 698 mm x 421 mm x 265 mm</li> </ul>

## Connection



For more information, please go to the [Yealink official website](https://www.yealink.com).